



Let's Get the Data Talking!

Highlighting some achievements of the newly created Data Integration Department



The Data Integration Department (DID) was created last September, merging three pre-existing teams—the Epi team originally from WAHIAD, the Observatory team, and the Global Burden of Animal Diseases (GBADs) technical lead—all aimed at getting the data talking! It will provide staff with greater insights into the data and analytics of our Organisation's processes, allowing us to make more informed decisions. Here are three data-driven highlights of what DID has been doing.

Situation reports on disease events – providing answers to your questions

Have we reached the peak of the annual wave of avian influenza? Has African swine fever spread to new countries? Have new animal species been affected by SARS-CoV2 infection this month?

So many questions on so many hot topics! Don't panic, the DID Epi team is here to help! To contribute to WOA's scientific communication and to help our staff better understand and communicate on these situations of concern, the team has developed periodic situation reports that are available on our website. These reports are periodically updated based on data collected by the Organisation and are now regularly announced through the new Yammer community '[Situation reports on disease events](#)'. Reports are currently being produced on three hot topics—avian influenza, African swine fever and SARS-CoV2 infection in animals—and there are more to come! Join the community now and stay informed!

Harmonising spatial data through our integrated Admin Boundaries Reference SharePoint

Where spatial data—data that is used to describe the location, shape and size of physical features on the Earth's surface—was concerned, each department and regional offices across our Organisation



were speaking a different language. They used different spatial data, notably country boundaries, administrative divisions (e.g. country, state, municipalities, villages or other jurisdictions) and disputed areas. Because administrative divisions change and evolve, it is important for staff to have access not only to the most recent information, but also to the historical changes of such divisions over time. Maps are also an important reference for analysis and data display.

'We should be able to use and communicate this data in a harmonised way'.

Consequently, DID, in collaboration with the WOAHP Data Management Working Group is pleased to announce that access to a geographic information systems (GIS) dataset, that encompasses the Organisation's country borders and administrative divisions, is now a reality! A [SharePoint](#) has been created for use by staff worldwide.

We highly recommend reading this introductory document [ReadMe](#) to better guide you on how to use the SharePoint content. We are also giving a luncheon to present this initiative in more detail on 21 March at noon. Be sure to join us via Zoom: <https://oie.zoom.us/j/96224640424>.

Using the Observatory Annual Report to your advantage

One key mandate of WOAHP is to develop international standards for its Members. However, once adopted, we do not know if and how these standards are implemented. The mandate of the [Observatory](#) is, therefore, to monitor the level of implementation of our standards and detect the challenges that can hinder their uptake. In January this year, the Observatory reached a key milestone with the publication of its first ever [Annual Report](#).

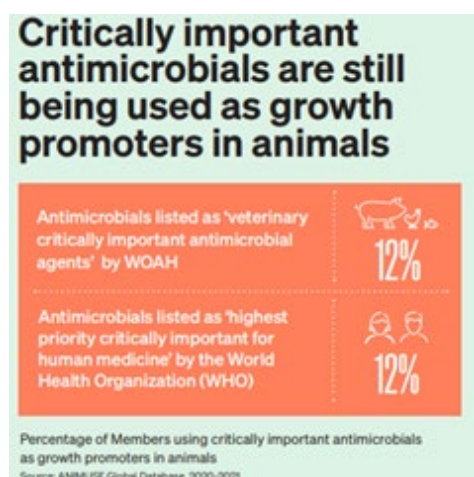
What's in it?

The report contains 12 sections covering the implementation of standards related to topics such as transparency, zoning and compartmentalisation, and antimicrobial resistance (AMR), to name a few. There is a [dashboard](#) and an [executive summary](#) for each section. And for our data-oriented readers out there, the report also includes an [indicator matrix](#) and a [data catalogue](#).

How can it help you?

The report provides interesting insights. For example, did you know that critically important antimicrobials are still being used as growth promoters in animals?

Additionally, the report contains areas for improvement not only for Members, but also internally for WOAHP. During the Observatory's Steering Committee meetings, these points are reviewed and prioritised and the Committee develops recommendations for the Organisation. The implementation of these recommendations is supervised by one of our Deputy Director Generals and attributed to WOAHP departments and teams. You can find the Steering Committee meetings and the Excel table listing the prioritised recommendations, allowing the monitoring of their progress, in the [Observatory SharePoint](#).



What can you do to promote the Observatory?

The Observatory team is holding webinars with all WOAHP Members in March to present and explain the Annual Report. You can support this WOAHP programme by:

- ✓ Disseminating our executive summaries across your networks
- ✓ Referencing the Observatory dashboards and executive summaries in your work
- ✓ Using our [email footer](#)
- ✓ Liking and sharing social media posts

In conclusion, data integration is an invaluable tool that will help our Organisation stay competitive and make informed decisions. The benefits of data integration are evident from the three data-driven highlights we have discussed, and we look forward to leveraging its potential even further in the future.

We wish to thank Gaspar Avendano Perez, Lina Awada and Paolo Tizzani for writing this article for *In-house Times*.

○ *In-house Times* – March 2023

